

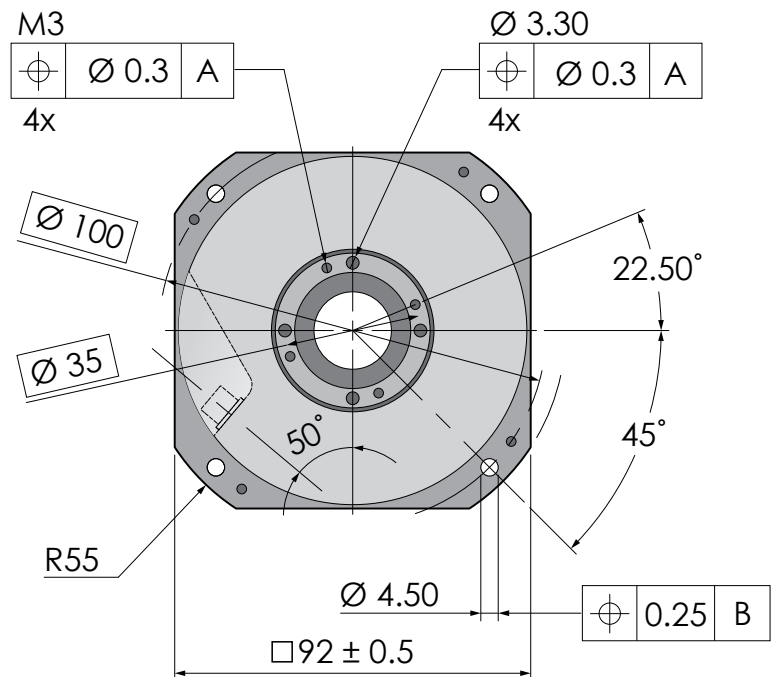
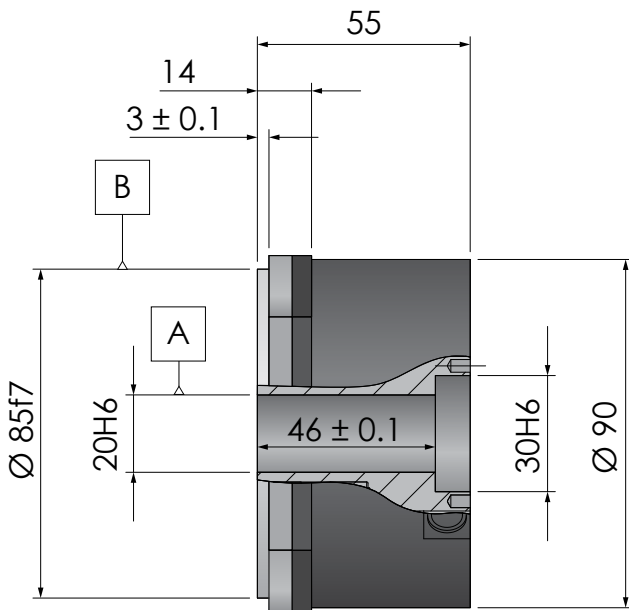
AH 90 series

- Hollow shaft w built in housing coupling
- 18,000 lines per disc
- Accuracy up to ± 2.5 arc seconds
- Typically used precision positioning and synchronization of rotary tables, and industrial robots



Compatible with:

- Heidenhain RON 200 series - RON 225 RON 275 RON 280, RON 285, RON 287, RON 285C, and RON 287C
- Fagor H-D90



AH 90 series

	AH 9001	AH9002	AH 9005	AH 9010	AH 9000
Line count	18,000				
Pulses per revolution	18,000	36,000	90,000	180,000	18,000
Output Signal	TTL/RS422				1 Vpp, differential
Max. output frequency	≥ 160 kHz	≥ 320 kHz	≥ 800 kHz	≥ 1 MHz	≥ 180 kHz
Max. mechanical speed	5,000 RPM				
Measuring step	0.005°	0.0025°	0.001°	0.0005°	<i>depends on external circuitry</i>
Accuracy grade	± 5 arc sec and ± 2.5 arc sec				
Reference mark	Single or 36 distance coded marks per revolution				
Permissible axial shaft play	0.1 mm				
Supply voltage	5 V ± 5%				
Supply current (without load)	≤ 150 mA				
Outlet type	Cable or housing connector (HR25 miniature 8 pin round)				
Max. cable length	100 m			150 m	
Environmental protection	IP64 (IEC 60529)				
Operating temperature range*	-20°C...+70°C				
Storage temperature range	-30°C...+80°C				
Humidity	98% (non-condensing)				
Vibration (55 ÷ 2000 Hz)	≤ 100 m/s ² (IEC 60068-2-6)				
Shock (6 ms)	≤ 300 m/s ² (IEC 60068-2-27)				
Weight (without cable)	Approx. 1.1 kg (2.4 lb)				
Rotor moment of inertia	≤ 65 · 10 ⁻⁶ kgm ²				
Starting torque	≤ 0.08 Nm				
Natural frequency	≥ 10,000 Hz				

*for best accuracy, operating outside 0°C...+50°C is not recommended

Ordering Guide *example: AH 9005-D-4*

AH 90XX	-X	-X
Model	Reference mark	Outlet type
<ul style="list-style-type: none"> AH 9000 AH 9001 AH 9002 AH 9005 AH 9010 	<ul style="list-style-type: none"> S - single D - distance coded 	<ul style="list-style-type: none"> C - housing connector 1 - 1m cable 2 - 2m cable 3...